

# Handbook

## TPE & silicone stain remover creme

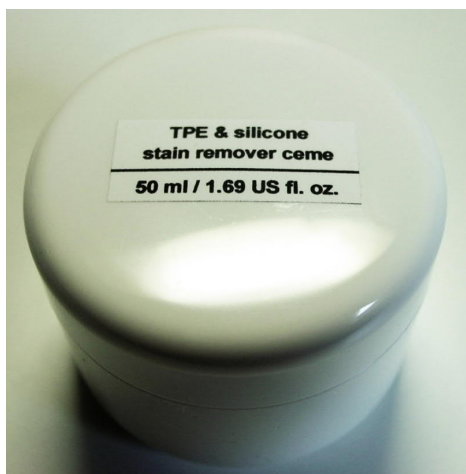
### 1.) General information about the TPE & silicone stain remover creme:

The stain remover creme has been developed for the removing of penetrated color pigments in TPE & silicone love dolls, which has been caused by clothing and discoloring materials.

A different usage, abuse, as well as the mixing of the TPE & silicone stain remover creme with other substances, is not permitted.

The stain remover creme is made of high quality, water-soluble components and does not include surfactants or phosphates.

The stain remover creme is produced in elaborate individual production and is shipped inside a sealed creme tin with a quantity of 50 ml / 1.69 US fl. oz. together with a quick instruction sheet.



## **2.) Safety and handling instructions for the TPE & silicone stain remover creme:**

**Store and keep the stain remover creme out of the reach of children !**

**The creme must be stored in a coolish environment because of the water-soluble components.**

This is especially important in hot seasons.

If you have no possibility for cooled storage, you can store the creme tin in the supplied plastic wrap in the refrigerator, separate from the food.

If, due to warming, water has separated from the creme or the creme has become thinner, stir the creme with a toothpick and refrigerate the creme for one night in the refrigerator.

**Please do not freeze the creme !**

It is recommended to use a small wide brush to apply the creme on the stained area as a covering layer.

This makes it possible to distribute the cream expedient and saved in consumption.

Please keep in mind, that it is not possible to massage the creme into the TPE & silicone material due of the water-soluble components.

## **3.) Exclusion of the functionality of the TPE & silicone stain remover creme:**

This is the case if, by previous measures with any solvents, other cremes or oils, the polymer structure of the TPE or silicone has changed or has been damaged, as well as the fact that the penetrated color pigments are now more or permanently anchored.

Examples for this are:

- Dissolution or damage by aromatic hydrocarbons, alcohols, disinfectants based on alcohol / ether, etc.
- Application of cleansing creams
- Excessive use of baby oil or mineral oil for targeted stain removal

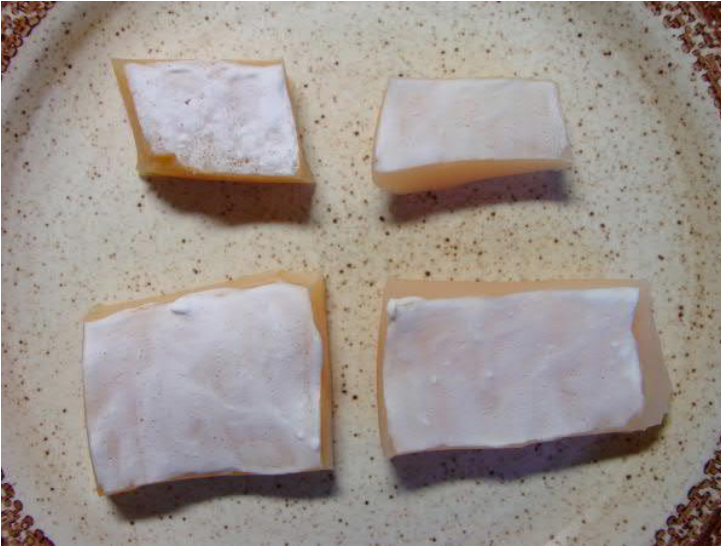
## **4.) Application and effect:**



It is recommended to use a small wide brush to apply the creme on the stained area.

You are not able to massage in the creme because of the water-soluble components.

The creme must be applied with the brush as a covering layer.



Let the creme work for 12 hours.

After 6-8 hours, the creme starts to crystallize.

(Because of that, the stain remover has the nickname "Sugar coating")

The creme is producing an air exchange inside TPE and silicone.

Here you can see the air bubbles within the crystallized creme on the surface.

That air exchange does a soft opening of the stains.

The creme on the surface has a soaking effect.

Therewith the stain remover is a "real remover" and not a bleaching product.



After 12 hours the creme can be flaked off / washed away with a bit soap and water.

**If you have only light stains** do nothing for the next 12 hours after the creme is removed.

The air exchange is still a bit working (after-effect) and you will see a better result after the 12 hours.

Apply the creme again on the next day.

Therewith you do have a controlled stain removing and you are able to save creme.

**For stronger stains** apply the creme every 12 hours, therewith you are using a stronger air exchange.

The required amount of used creme is a bit higher with that method.

**5.) Application example with a love doll:**



**6.) Registration with the German Federal Institute for Risk Assessment:**

Bundesinstitut für Risikobewertung (BfR)

According to Article 10 of the German Detergent and Cleaning Agents Act, the TPE & silicone stain remover creme is registered as cleaning agent with the following information:

**BfR - Product name:**            **TPE & silicone stain remover creme**

**BfR - Product number:**        **6547868**

**Information about the manufacturer:**

Indigo-Individual e.K.  
Gerd Hahn  
Bayernstraße 36  
92533 Wernberg-Köblitz  
Germany

Registry court: District court Amberg, HRA 3552

**Contact:**

Phone: +49 9604 / 93 26 489  
Email: [indigo-info@web.de](mailto:indigo-info@web.de)

© by Indigo-Individual e.K., May 2020  
Version: 4.0

